

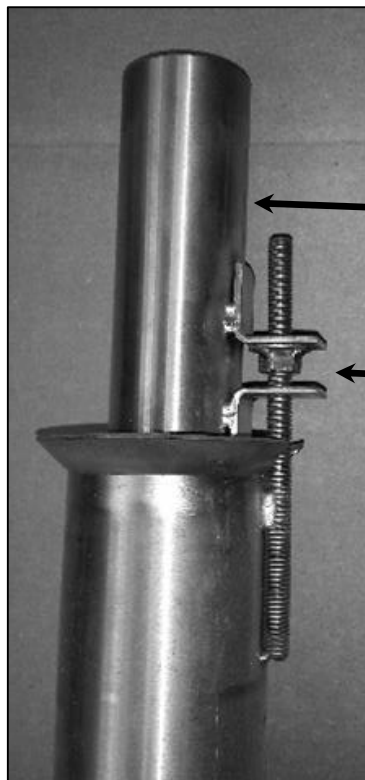
CARBURETOR PICK-UP PROBE OPERATING INSTRUCTIONS

This carburetor pick-up probe is designed for bulk media transfer, with a minimum of attention by an operator. Some tending may be necessary at the final stages of operation as the pile of material from which you are pulling becomes too small or shallow to allow the unit to self-feed.

1. Adjust material tube to full up position (turn adjusting washer counter-clockwise).
2. Slip Vacuum hose over carburetor material tube (top center)
3. Shove carburetor into material at least 1-2 feet. Carburetor will work itself into the material during operation.
4. Open ball valve on the Vacutrans. Unit will begin to transfer material.
5. Using adjusting washer, slowly adjust the material tube down into the air tube, until surging is noticed in the vacuum hose. Surging will cause the vacuum hose to wiggle. Unit is flowing too much media
6. Back material tube up slowly until surging stops. This will be maximum flow rate.

It is very important that the material be dry and able to flow. Damp and wet materials will be either slow or will not transfer at all.

It is very important to keep the probe in a near vertical position. Unit will not operate correctly if lying in a horizontal position.



Air Tube

Material Tube

Adjusting Screw

