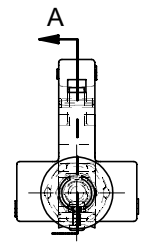
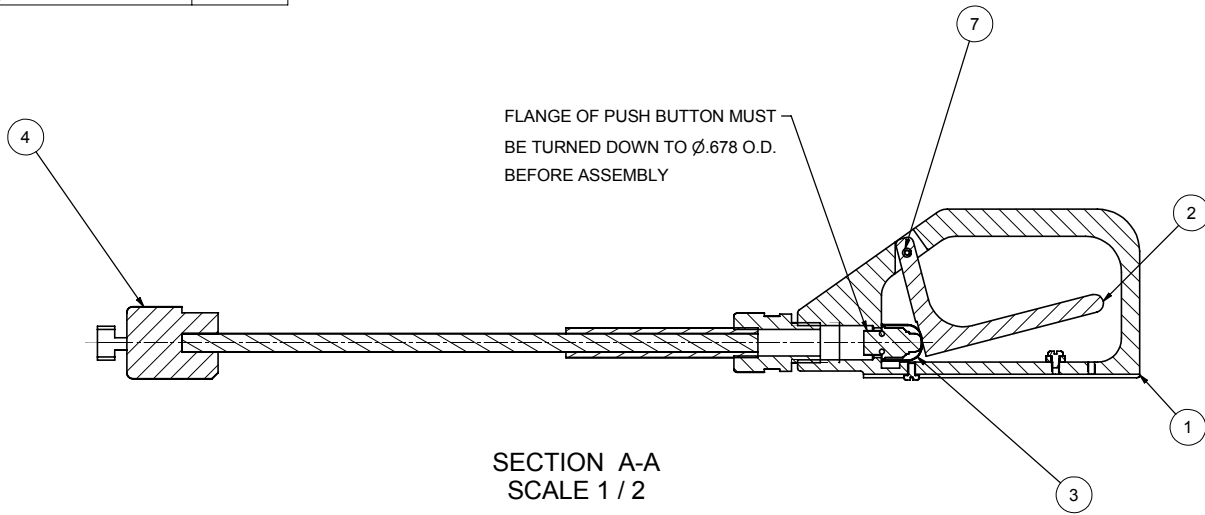
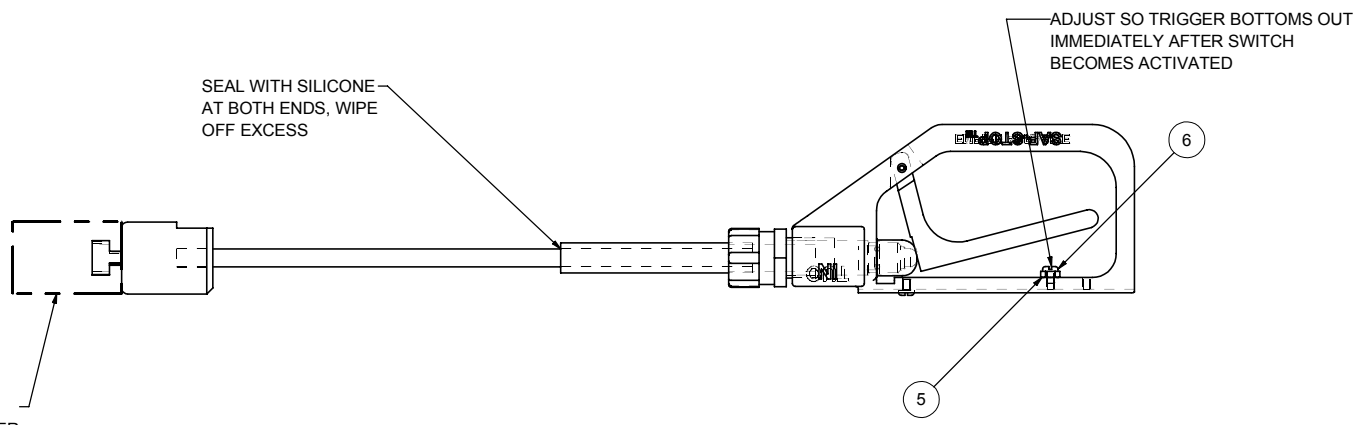


PART LIST				
ITEM	QTY	PART NUMBER	DESCRIPTION	Thickness
1	1	753672A	MODIFIED SAF-STOP HANDLE	
2	1	753672-B	MODIFIED SAF-STOP TRIGGER	
3	1	534541	BOOT, PUSHBUTTON	
4	1	290353	SWITCH ASSY, 77-E, SAF-STOP	
5	1	552342	NUT, HEX, #8-32, PLATED FINISH	
6	2	551682	MACHINE SCREW, 8-32 X 1/4", SLOTTED PAN HEAD	
7	1	517652	ROLL PIN, 1/8" X 3/4"	



FEMALE RECEPTACLE
SUPPLIED BY CUSTOMER
REF. PT. NO. 530042



TOLERANCES UNLESS SPECIFIED:
 FRAC. ± 1/64 TO 1/2" ± 1/32 OVER 1/2"
 DEC. ± .010 2 PLACE, ± .005 3 PLACE
 ANG. ± 1/2°

THIS DRAWING IS THE PROPERTY OF AND CONTAINS DESIGN FEATURES AND CONSTRUCTION WHICH ARE PROPRIETARY TO EMPIRE ABRASIVE EQUIPMENT COMPANY. IT SHALL NOT BE REPRODUCED, COPIED, OR DISCLOSED TO ANYONE ELSE WITHOUT WRITTEN PERMISSION AND SHALL NOT BE USED IN ANY MANNER DETRIMENTAL TO EMPIRE ABRASIVE EQUIPMENT COMPANY'S INTEREST.

 EMPIRE ABRASIVE EQUIPMENT CO. 2101 WEST CAROL BOULEVARD LANGHORNE, PENNSYLVANIA 19047-1893 USA (215) 752-8800 FAX (215) 752-9373	TITLE		PART NO.		REV	
	SAF-STOP HANDLE ASSY, ELECTRICAL		290354		ECONO. DATE	
	DRAWN dbrowl	DATE 2/2/2006	APP. BY.	DATE	SCALE SEE VIEW	SHEET 1 OF 1 DWG NO C064002